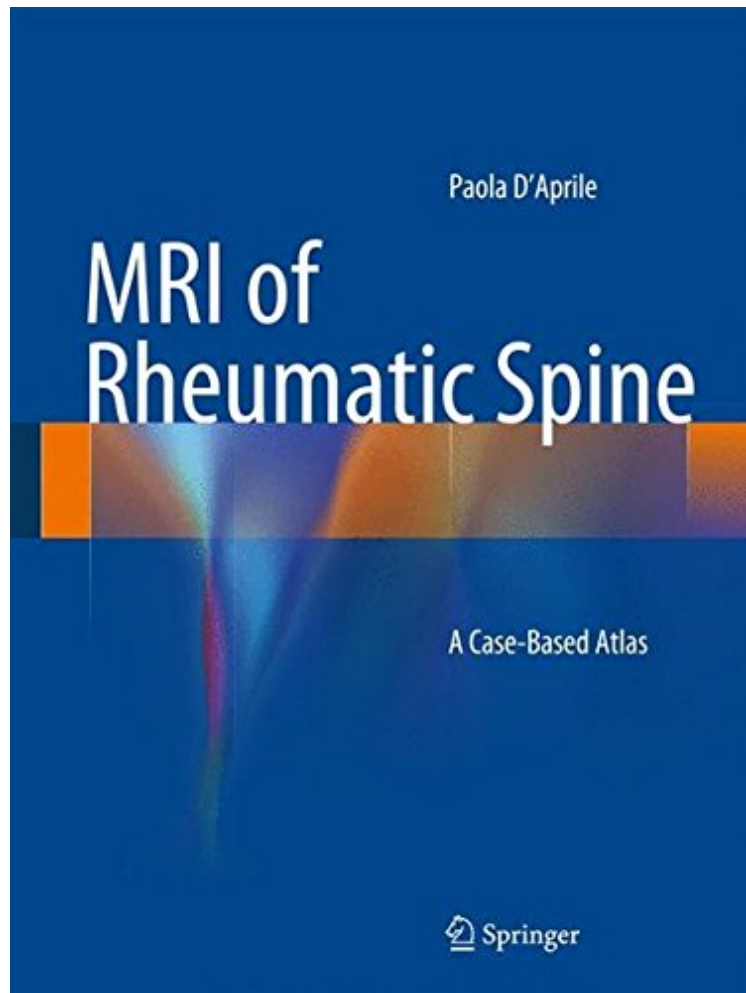


MRI of Rheumatic Spine: A Case-Based Atlas

Paola D'Aprile

*audiobook / *ebooks / Download PDF / ePub / DOC*



DOWNLOAD



READ ONLINE

#4709259 in Books Paola D Aprile 2014-06-26Original language:EnglishPDF # 1 .60 x 8.30 x 11.00l, 1.70
#File Name: 3319056263164 pagesMRI of Rheumatic Spine A Case Based Atlas | File size: 79.Mb

Paola D'Aprile : MRI of Rheumatic Spine: A Case-Based Atlas before purchasing it in order to gage whether or not it would be worth my time, and all praised MRI of Rheumatic Spine: A Case-Based Atlas:

This richly illustrated and comprehensive case-based atlas documents the MR findings observed in spondyloarthritis and offers guidance on selection of the appropriate imaging protocol, which is critical in detecting the potentially very subtle changes. The presented MR study protocols include T2-weighted sequences with fat saturation and contrast-enhanced T1-weighted sequences with fat saturation, these being sequences which permit better visualization of inflammatory changes of both anterior and posterior elements of the spine. Cases of spondylitis, discitis, osteoarthritis and sacroiliitis are described and concise information is provided on the clinical history of the rheumatic diseases. The inclusion of a large number of high-resolution images ensures that the atlas will serve as a guide to differentiation

between potentially confounding diseases and an aid to early diagnosis, which has become essential with the advent of new treatments in the field of spondyloarthritis (TNF inhibitors). In addition to radiologists, neuroradiologists, rheumatologists, orthopedists and physiatrists will greatly benefit from the contents of this volume and its thorough presentation of the rheumatic diseases.

From the book reviews: This is a case-based atlas of MRI findings in various rheumatic diseases involving the spine. The audience includes radiologists, rheumatology residents and fellows, and practicing rheumatologists, as well as orthopedists and physiatrists. The book does a good job of explaining the MRI findings, so it is easy to read even without much background in radiology. (Eun Joo Park, Doodys Books, November, 2014) From the Back Cover This richly illustrated and comprehensive case-based atlas documents the MR findings observed in spondyloarthritis and offers guidance on selection of the appropriate imaging protocol, which is critical in detecting the potentially very subtle changes. The presented MR study protocols include T2-weighted sequences with fat saturation and contrast-enhanced T1-weighted sequences with fat saturation, these being sequences which permit better visualization of inflammatory changes of both anterior and posterior elements of the spine. Cases of spondylitis, discitis, osteoarthritis, and sacroiliitis are described, and concise information is provided on the clinical history of the rheumatic diseases. The inclusion of a large number of high-resolution images ensures that the atlas will serve as a guide to differentiation between potentially confounding diseases and an aid to early diagnosis, which has become essential with the advent of new treatments in the field of spondyloarthritis (TNF inhibitors). In addition to radiologists, neuroradiologists, rheumatologists, orthopedists, and physiatrists will greatly benefit from the contents of this volume and its thorough presentation of the rheumatic diseases.